

PART OF THE NW.1/4, OF SECTION 7, T.6N., R.2W., S.L.B. & M.

FREMONT 2 SUBDIVISION

IN WEBER COUNTY

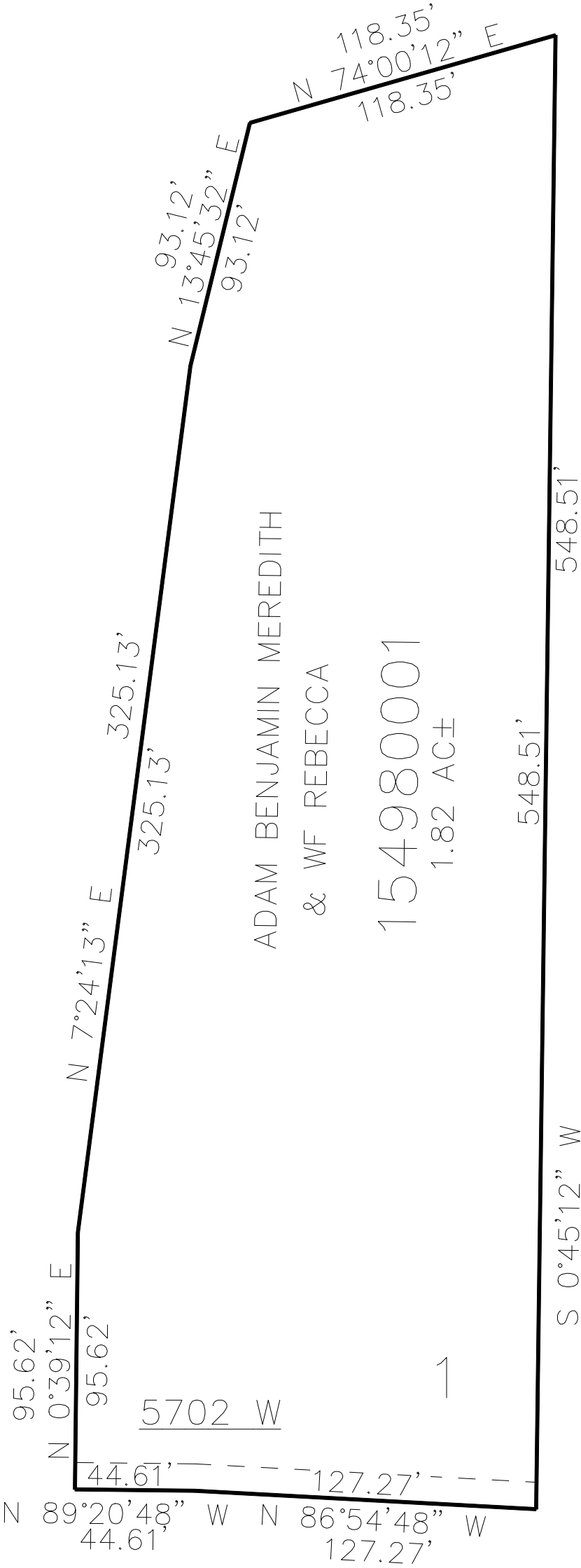
TAXING UNIT: 531

SCALE 1" = 50'

SEE PAGE 26

SEE PAGE 26

SEE PAGE 26



10' UTILITY & DRAINAGE EASEMENTS EACH
SIDE OF PROPERTY LINES AS INDICATED
BY DASHED LINES EXCEPT AS OTHERWISE
SHOWN.

FOR COMPLETE ENG DATA SEE
ORIGINAL DEDICATION PLAT IN
BOOK 70, PAGE 35 OF RECORDS.

SEE PAGE 26